

Historic, Archive Document

Do not assume content reflects current scientific knowledge, policies, or practices.

62,93

INDEXED LIBRARY

RECEIVED

JAN 27 1930 ★

U. S. Department of Agriculture.

Swedberg Bros. Nursery

Battle Lake, Minnesota

"Service, Quality, Fair Prices, Since 1915"

1930



OUR NEW BEAVER STRAWBERRY



Stock of the Better Kind

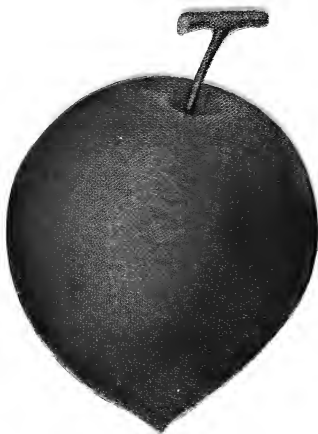
High Grade But Not High Priced

Received from Mrs. E. J. ... Dr. N. Shoen...



HARALSON

The New Minnesota Apple—Half size shown.



Waneta Plum

Four of our leading Plums. You'll make no mistake in planting them. Hardy and will ripen early.

UNDERWOOD—Large, red, very early.

WANETA—Large, red, mid-season.

MONITOR—Large, red, late mid-season.

Special price to introduce these new fruits—One tree each (4) for only..... **\$3.00**

TERMS OF BUSINESS AND OUR GUARANTEE

Cash with order unless otherwise agreed. Remit by P. O. or Express Money Orders, Bank Draft or your personal check. Send in your order early and remit when you want goods shipped, if you wish. We give three of one kind and size at dozen rates; fifty at one hundred rates; three hundred at thousand rates. We ship by express or freight; smaller shipments by mail. Always allow for postage if you want parcel post shipment. State when you want shipment sent. While we exert the greatest care to have everything true to name we will not assume any responsibility for errors that may occur other than to replace any stock which may prove untrue. We replace all stock that fails to grow at one-half list price if reported to us within 90 days after goods are received. This means that it will reach you in a healthy, growing condition, and is a fair deal. All goods are shipped F. O. B. Battle Lake, Minnesota, unless otherwise arranged.

Send your order in as soon as you receive this catalog—the sooner the better. Prices are net F. O. B. Battle Lake, Minnesota. Packing Free.. Gladiolus and seeds sent postpaid on receipt of price.

When single price is given, for dozen rate multiply by 10. Ex: 50c each or \$5.00 per dozen.

Plums

PROF. HANSEN'S HYBRID PLUMS

The Plums Without a Plum Pocket

SAPA—Blue-black. Solid cherry plum. Very heavy bearer.

OPATA—Red; green meat. Large. fine flavor.

HANSKA—Red. flavor of apricot. fine for canning and preserving.

WANETA—The mammoth red plum. Size of a small crab.

OTHER PLUMS AND CHERRIES

COMPASS CHERRY—Red. The hardy plum cherry. Good.

DESOTO—Medium to large; color yellow turning to red when fully ripe; flesh firm and good. Medium to late.

LORING PRIZE—Seedling of the Burbank crossed with Surprise. Most remarkable plum introduced in a decade.

SURPRISE—Fruit large, dark purplish red; flesh firm, tender and of fine quality.

TERRY—Our best Native Plum. Abundant bearer. delicious to eat out of hand. Latest to ripen.

NEW MINNESOTA HYBRID PLUMS

State Breeding Farm Fruit



Underwood Plum

UNDERWOOD—A cross between Shiro and Wyant, is one of the outstanding members of the new group of hybrid plums. Red over yellow. Large, early, semi-cling, juicy, sweet. Early.

TONKA—A cross between Burbank and Wolf, considered one of the best of Minnesota hybrids, light red. Large, midseason, freestone, a good canner. Early.

RED WING—A Burbank and Wolf Cross, it's marked for distinction because of its unusually large fine appearing, light red fruits which are so well adapted to dessert and culinary purposes. The skins and pits are so easily removed that the fruits can readily be sliced and served with sugar and cream, like peaches. Midseason.

MONITOR—A Burbank and native cross, bronze red. Large, late, A delicious fruit and heavy cropper. Late midseason.

RADISSON—A cross between unknown varieties of *Prunus Salicina* and probably *Prunus Americana*. It produces a large showy red plum of most delicious flavor, ripening about August 1st. Early.

HENNEPIN—A Satsuma and Americana cross. A dark reddish purple plum covered with dense bloom, giving it a distinctive and attractive appearance, valuable for canning and preserving on account of its rich purplish red flesh. Early.

GOLDEN ROD—A Shiro and Howard Yellow cross, a clear yellow plum, a promising marketing variety because of its firm flesh, large size, attractive color. Late.

We grow other varieties as Anoka, Elliot, LaCrescent, Mendota, Mound, Winona, etc., if interested in these they are same price as the other Hybrid Plums.

This is what one customer told us last summer: "I thought that this country could not grow the delicious plums as we had in the Country (Sweden), but now I am convinced that these are far better in quality and flavor." (This was after sampling several of these new Hybrid Plums).

ZUMBRA CHERRY—A sandcherry and pincherry and black sweet cherry cross. Purplish-black fruit. Ripe in August. Crisp flesh pleasantly flavored, fine canner. Stone very small.

ST. ANTHONY CHERRY—A sandcherry and Satsuma plum cross. Resembles the Sapa, but more attractively colored. Fine flavor. Dull purplish-red. Flesh dark red, juicy. Late August.

Minnesota Pear No. 1

A new variety of promise produced by the Minnesota Fruit Breeding Farm.

Apples

"E" "C" designates—E. for "Eating"—C. for "Cooking" or E. and C. good for both eating and cooking. This information is given for our customers as in general they want to know what the variety is good for. Note the "E" or "C."

Summer Apples

DUCHESS OF OLDENBERG, E—Good size, yellow, streaked red, juicy, rich, sub-acid, productive. Valuable for market.

YELLOW TRANSPARENT, E—Earliest and best; tender, juicy, sprightly, sub-acid.

Autumn Apples

PATTEN'S GREENING, C—Large, round, yellowish green with bronze, blush, sub-acid. Very hardy.

WEALTHY, E and C—Originated in Minnesota. Hardy. Vigorous and very productive.

WOLF RIVER, C—Large, handsome; yellow, striped red, juicy, pleasant, spicy flavor, very hardy.

FOLWELL, E—One of Minnesota State Fruit Breeding Farm apples. Good quality, same season as Wealthy.

HIBERNAL, C—Sour, good for cooking. Tree very hardy.

OKABENA, E—Similar to Duchess, but later and preferred by many to that variety.

Winter Apples

ANISIM, E and C—Season early winter. Color crimson; valuable in the Northwest.

Haralson, E and C—One of Minnesota State Fruit Breeding Farm apples. Keeps until Spring in a common cellar. Quality very good. Hangs to tree until late.

McINTOSH, E—Medium size, dark red, good quality, juicy, sub-acid.

MALINDA, C—Season late winter; color yellow with red blush. Best winter apple for the North.

NORTHWESTERN GREENING, C—Hardy, yellow, rich, of good size; extra long keeper.

RED WING, E and C—Very hardy, large, red, splashed.

ERICKSON, E and C—Very large, red, extremely hardy and vigorous grower.

RED DUCHESS, E and C—Hardy, regular bearer, high red color, early and of especial merit.

Crab Apples

Perfectly hardy, succeed everywhere; early and annual bearers.

HYSLOP—Large, deep crimson; one of the most beautiful; very popular.

FLORENCE—One of the best to plant. Very hardy; an early bearer. Fruit large, red and of good quality. Origin, Minnesota. Tree very hardy.

SWEET RUSSET—Large, roundish oblong, greenish yellow, mild, sweet.

TRANSCENDENT—Immensely productive, bright red; one of the most popular.

WHITNEY—One of the largest, glossy green, splash carmine; firm, juicy, pleasant, great bearer. Fine to eat out of hand.

DOLGO CRAB—Brilliant red, oblate apples. Suitable for all uses. Tree very attractive with dense dark green foliage.



Alpha Grape

Grapes

BETA—The "Standard" Hardy Grape. The most widely grown and probably the most profitable grape in the Northwest. A heavy, annual bearer, hardy as the wild grape and producing enormous crops of medium sized blue-black fruit of good quality. It ripens so early that it may be grown in the far north.

ALPHA—A more recent production than Beta and preferred to it by many of those who have grown it. Originated near St. Cloud, Minn. Equal to Beta in hardiness and yield. The introducers of Alpha claim for it a much higher quality than that of Beta. It is worthy of extensive cultivation.

CONCORD—Of the Tender Grapes we are growing only the Concord, the most generally satisfactory of the tender grapes. A vigorous grower and a heavy producer of good quality fruit which is far superior to the hardy grapes in size and flavor. Concord is a standard grape everywhere. We offer only strong two-year vines.

Send for Instruction Book, "How to Plant, Grow, Prune and Care for Grapes"—It's FREE.

Currants

PERFECTION—Bright red of a large size. Productive, mild sub-acid flavor. Plenty of pulp and few seeds.

FAY'S PROLIFIC—Large red berry; fine flavor, very prolific, valuable for both home and market.

WHITE GRAPE—Berries large to very large, yellowish white color. Sweet, excellent for table. Finest of the white sorts.

RED CROSS—A strong growing variety. Cluster long; berry medium to large; bright red; quality good.

BLACK—The leading well tested black currant. Excellent quality, strong grower.

STOCK OF THE BETTER KIND

Gooseberries

HOUGHTON—A reliable old variety, enormously productive, of vigorous growth. Good quality.

DOWNING—Large, handsome pale green, berry of splendid quality. Bush vigorous, strong and upright.

RED JACKET—A wonderful cropper. Large, smooth berries. Prolific and hardy.

PEARL—A healthful, productive variety. Pale green berries, valuable for home and canning.

CARRIE—Vigorous, productive. One of the best old sorts. Large, red berries.

COMO—Fruit roundish, ripens green; quality good; holds on bushes a long time without scalding. Minnesota Station fruit.

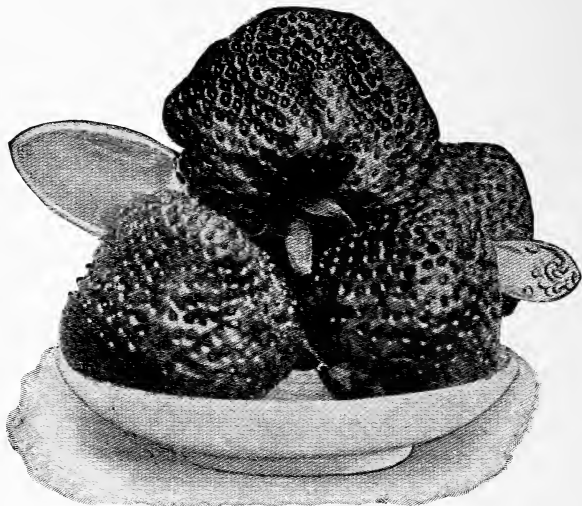
Strawberries

Everbearing Varieties

CHAMPION—Quality of the best; large size; productive and hardy. One of the leading everbearing varieties.

PROGRESSIVE—For many years the standard in this class.

DULUTH—Minnesota Fruit Breeding Farm origination. Dark red, very good variety.



Mastodon Everbearing (the world's best)

MASTODON—World's best. Wherever this variety has been exhibited it has taken first prize, because of its size, color and flavor. Visitors to our field last fall pronounced it a wonderful fruit and healthy strawberry plant. Be sure to get a start of this variety this season.

Spring Bearing Varieties

SENATOR DUNLAP (S)—This berry is of the Warfield type, has a perfect blossom, is hardy, productive, a splendid keeper and able to hold its own under any "rough and tumble" methods of culture to which it is likely to be subjected. It is a very heavy bearer of good size, even fruit, of a very beautiful dark red color. It is a berry to grow for either home use or market.

PREMIER (S)—Large, firm berry and early variety, red all thru.

BEAVER—The new strawberry, with a very much improved flavor, heavy bearer and drought resistant. **Only \$3.00 per 100; \$1.00 for 25.**

FOLDING BERRY BOXES

The best made—\$2.00 per 100. Quart or pint size boxes, \$3.50 per 250; \$6.00 per 500.

Brookville, Indiana,
April 4, 1928.

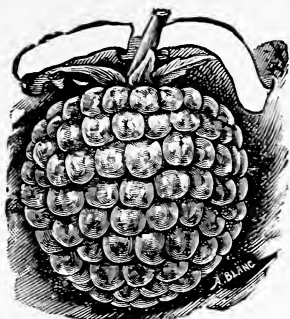
Wish to advise that the Gladioli and Delphiniums arrived in very fine condition. They are planted and are coming along splendidly. Thought one of the Delphiniums wasn't going to grow, but leaves have come from the roots and it is doing fine. Please accept my thanks for prompt service. Yours truly,
Miss A. H., Brookville, Indiana.

April 23, 1928.

I want you to know that I appreciate the lovely Delphinium plants you sent me some three weeks ago. They come at a splendid time and are growing just beautifully, now have four or five leaves on them. Am certainly hoping they will stand the hot summer we have here which I know is their enemy. Thank you.—
Mrs. L. S. B., Blytheville, Arkansas.

Raspberries

Write for Special Prices quoted on 500 or 1000 lots.
Mosaic Free.



Latham, Natural Size

LATHAM RASPBERRY

Minnesota No. 4

Minnesota Station Fruit

The leading Red Raspberry in size, color, quality, hardiness and productiveness. The superior kind.

CUMBERLAND—The best black-cap raspberry.

KING—Early, red; large berries, very hardy, good quality.

ST. REGIS—Red; the so-called Everbearing.

SUNBEAM—Very hardy, red; early variety. Good flavor.

Strong, transplanted Raspberry plants.

LUCRETIA DEWBERRY—Hardy trailing black berries.

ELDORADO and **OLDER BLACKBERRY**—The two best varieties, should have winter protection.

Rhubarb

This deserves to be ranked among the best early fruits in the garden. It affords the earliest material for pies and tarts, continues long in use, is valuable for canning. We offer the large juicy red California Sweet.

Asparagus

WASHINGTON—This Giant Asparagus is the result of fourteen years of plant breeding by the United States Department of Agriculture in an effort to develop a rust-resistant asparagus, surpassing all other varieties in yield and quality. It is one of the most palatable and tender varieties known, producing enormous shoots of a brilliant dark green color which retain their tenderness and do not branch until well above cutting height. It has proved itself to be a tremendous producer and best of all it is entirely free from rust.

CHIVES OR GRASS ONION

The leaves are slender and appear very early in the spring, and may be shorn several times during the season. The chives are equal to the Onion for flavoring soups and salads.



Washington Asparagus

Hoseradish Roots

Set roots vertical, small end down. Cultivate thoroughly until tops cover ground. Grown extensively by home gardeners as well as market gardeners.

The bundle of Nursery Stock reached Anchorage, May 7th. It arrived in fairly good shape considering the distance it came and the time on the way. The strawberry plants and asparagus were mouldy, that was most likely due to being in steam heated express cars and steam heated space aboard ship.

There will be some of the strawberry plants that will not make it, but I believe the asparagus will all grow. The moss was nice and moist around the roots of everything. I set out all the stuff by the tenth and several of the trees have made a noticeable start at budding out. The ornamental shrubbery, currants, gooseberries and raspberries have all made a start budding out. The rhubarb has made a splendid start. The flower, bulbs and roots I have under glass in cans and boxes, they are starting up good.

Very truly yours,

D. S. D. Dated at Anchorage, Alaska,

May 7th, 1928.

Ornamental Flowering

Real Specimens; Good Strong Plants

COTONEASTER (*Acutifolia*)—A dense growing shrub with small glossy dark-green leaves. Hardy; stands partial shade. 6 to 8 feet.

DOGWOOD (*Red Twigged—Alba sibirica*)—Free growing. Bark is a showy red in early spring. Dainty white flowers come early in summer, followed by whitish blue berries. 6 to 10 ft.

ELDER, Cut Leaf. (*Nigra laciniata*)—Half drooping; leaves are fern like. Especially effective in masses.



Golden Elder

ELDER, Golden (*Nigra aurea*)—Golden leaves. Flowers white, in flat topped cymes in early summer. Prunes well. 6 to 8 ft.

CRANBERRY, High Bush (*Opulus*)—Very hardy. White flowers of early summer are followed by brilliant red edible berries resembling cranberries.

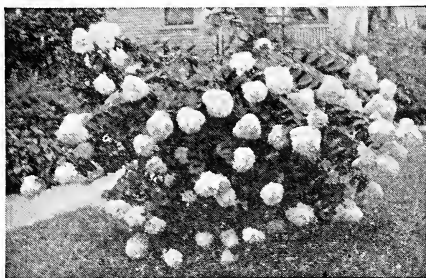
HAWTHORN—Bears thickly clustered white flowers in May. Produces edible red berries in September. Prunes well.

HONEYSUCKLE, UPRIGHT (*White or Pink*)—White or pink flowers which contrast beautifully with the foliage. Blossoms in June.

HYDRANGEA ARBORESCENS STERILIS, (also Hills of Snow, Summer Hydrangea, or Snowball Hydrangea.) The blooms are of the very largest size, of pure snow-white color, and the foliage is finely finished. One of its most valuable characteristics is its coming into bloom just after the passing of all the early spring shrubs.



Hydrangea Arborescens



Hydrangea P. G.

HYDRANGEA, PANICULATA GRANDIFLORA—These plants are absolutely hardy, grow in any soil and bloom the same year they are set out. They flower abundantly, bearing hundreds of immense panicles of bloom. White turning to rose in autumn. An annual shortening of branches tends to increase the size of the flowers. Very fine and valuable for cemetery planting.

HYDRANGEA, Tree—The lovely Hydrangea Paniculata in tree form. These fine trees are two to four feet high, with strong, erect stems and splendid crowns, bearing great trusses of flowers. They are very effective for lawn; or if planted along the walk or driveway, they are wonderful when in bloom. By planting several of these beautiful trees you can prove to your friends that these Tree Hydrangeas are exceptionally nice and not commonly seen. Perfectly hardy here.



Hydrangea Tree

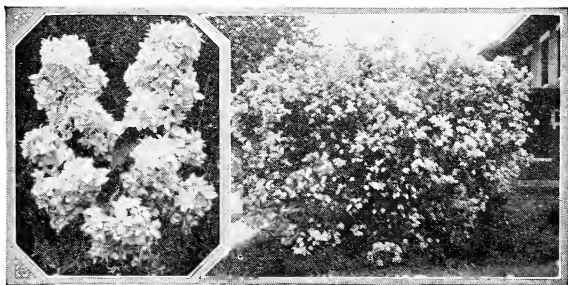
LILAC (Hungarian—Josika)—Blue flowers in June after other lilacs have ceased blooming. Does not sucker from roots.

LILAC (Pres. Grevy)—Double. Clusters large, full, pale wisteria violet. (See cut below).

LILAC (Common Purple)—Bluish purple flowers, well known.

LILAC (Common White)—Cream white flowers.

LILAC (Persian Purple)—Of more slender growth and finer foliage than the common lilac. Flowers purple in large, loose panicles. Does not sucker from roots.

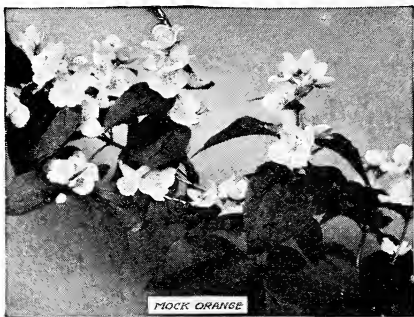


Lilac, Pres. Grevy—Double Flowers, Beautiful

Valley City, N. Dak., May 14, 1929.

The Delphiniums, Gaillardia and Phlox which I ordered from you came in splendid condition and I am well pleased with the fine appearance of the stock.

Sincerely, M. M. M.



MOCK ORANGE (*Philadelphus*)—Bears fragrant, creamy white flowers in great profusion. Will grow high enough to make screens. We grow these in several varieties.

ALMOND, Pink (*Rosea*)—Bears very double rose colored flowers on short stems. A general favorite. 4 to 5 feet.

SNOWBALL (*Common*)—A popular shrub. Makes a large bush. Bears balls of pure white flowers in June.

SNOWBERRY, red and white—White or rose flowers are produced in great abundance during summer. White berries which follow are borne on the bush until autumn.

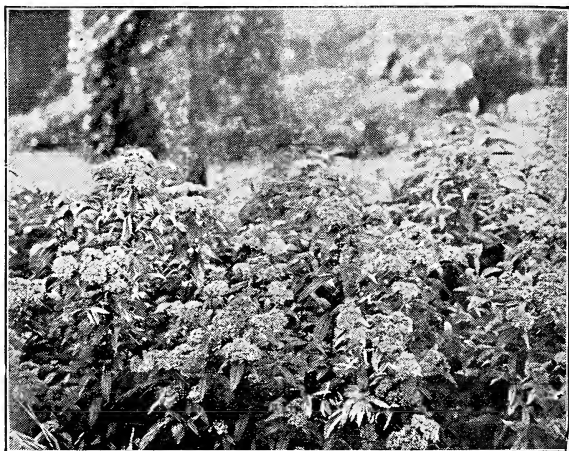
SUMAC, Cut Leaved (*Typhina*)—Fern like foliage is brilliantly colored in autumn. 8 to 10 feet.

SUMAC, Staghorn—A picturesque form, with handsome leaves, and deeply cut leaflets.

SYRINGA (*Mock Orange*)—Beautiful, tall, vigorous, hardy, with profuse, white, orange-like flowers in May. Very popular.

TRILOBA, Flowering Plum—Flowers in May are double, of delicate pink, nearly an inch in diameter, thickly set on branches.

VIBURNUM, Lantana or Wayfaring—A shrub growing 8 to 10 feet tall. Heart shaped leaves and showy flower clusters, followed by red berries, which later turn to black.



Spirea Anthony Waterer

Spirea

TEN HARDY VARIETIES

SPIREA, ANTHONY WATERER—A small dwarf variety 1½ ft. covered with flat heads of pink flowers. Used for edging and in front of shrubbery.

SPIREA Arguta—Bears pure white flowers early in spring. Narrow, bright green leaves assume yellow and orange tints near end of season.

Hallock, Minnesota, April 19, 1927.

Received the Gladiolus and Dahlia bulbs in fine condition.—Mrs. A. N.



Spirea Van Houttei

SPIREA Billardi—Narrow, dense spikes of bright pink flowers. A strong grower. Good for cut flowers.

SPIREA Callosa Alba—Dwarf. Pure white; blooms all summer.

SPIREA Golden or Aurea—One of the best of our yellow leaved shrubs. Holds its color all summer.

SPIREA Prunifolia—As the leaves are opening, tiny snow white double flowers wrap themselves along the branches in a lavish display of bloom.

SPIREA Ninebark or Opulifolia—Grows rapidly upright to ten feet, although branches droop when flower laden.

SPIREA (Thunbergii)—The earliest of the Spireas to bloom. Of a rounded, graceful form. Branches slender and somewhat drooping. Foliage narrow and yellowish green, changing to delicate purple in fall. Flowers pure white.

SPIREA Sorbifolia or Ash Leaved—Long showy panicles of white flowers. Grows six to seven feet.

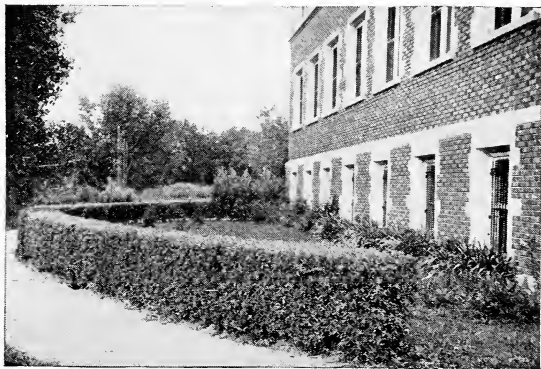
SPIREA, VAN HOUTTEI—Graceful, with long, drooping sprays, thickly studded with handsome, pure white flowers; hence its popular name, "Bridal Wreath." The finest Spirea of them all.

Desirable Plants for Hedges

BARBERRY (B. Thunbergii)—Low spreading bush, with small branches covered with small sharp thorns and in spring with small yellow flowers, succeeded by bright scarlet berries.

COTONEASTER—Dense growing shrubs, makes a fine hedge. See description under shrubs.

BUCKTHORN—Very hardy and desirable for hedge purposes. Endures shearing well.



Hedge of Russian Olive, Buckthorn or Caragana can be used

Wilmar, Minnesota.

"Just received my strawberries and raspberries; they came in good condition and expect them all to grow."—C. C.

Shade and Ornamental Trees

- ELM**—(*Ulmus americana*). Tall, graceful wide - spreading tree. Native of the North. Very suitable for street planting.
- ASH**—(*Fraxinus americana*.) Under proper cultivation it grows rapidly. It will last permanently. It is a beautiful shade tree. Hardy as the old oak tree.
- BIRCH** (*Betula papyrifera*).—A beautiful tree, well known. A native of this country. Bark smooth, silvery-white. Requires plenty of moisture.
- BOX ELDER**—A native tree of exceedingly rapid growth. Exceptionally hardy.
- BUTTERNUT** (*Cinerea*)—Lofty and spreading; valued for tropical appearance, beautiful wood, and nuts.
- SILVER MAPLE or SOFT** — Grows rapidly; attains large size; head attractively rounded. Foliage bright green with silver beneath.
- SUGAR MAPLE** (*Saccharum*)—Straight grower, vigorous, stately; inclined to form wide spread when given room. Dark green foliage. Also known as Hard Maple.
- SCHWEDLER'S MAPLE** (*Purple Norway*)—Leaves attract particular attention in spring with their gleaming red and purple tones.
- MOUNTAIN ASH**—Grows 18 to 20 feet, producing bright red berries; excellent for planting among shrubbery.
- SILVER POPLAR** (*Alba*)—Rapid grower. Leaves glossy white underneath. Root inclined to sprout where unattended.
- NORWAY POPLAR**—A hybrid of the Dakota Cottonwood and possibly of the Balm of Gilead. Called the Sudden Saw Log.
- BIRCH** (*Cut Leaf Weeping*)—Bark silvery white; leaves delicately cut. Perfectly hardy.
- WEeping WILLOW** (*Babylonica*)—Tall growing, with long, drooping branches and narrow, dark-green leaves. An interesting tree, with graceful habit.
- WEeping MOUNTAIN ASH** (*Aucuparia pendula*) — Branches droop and straggle, making a pleasing effect. Bears red berries which hang all winter.
- BLACK WALNUT** (*Nigra*)—Tall and majestic; trunk straight and bare; produces rich, meaty nuts.
- HORSE CHESTNUT** — White flowering, with darker leaves and splendid flower spikes a little later in the season. Perfectly hardy and popular but rare sort.
- RUSSIAN OLIVE** (*Eleagnus angustifolia*). Its light green and silver leaves make it valuable in color contrasts. A tall grower, making a heavy trunk when pruned. Very hardy.
- SIBERIAN CRAB** (*Pyrus baccata*).—Small spreading tree with clusters of pink-white drooping flowers. The fruit is yellow or red. Very hardy.
- LAUREL LEAF WILLOW**. (*Salix pentandra*).—Upright and spreading in growth. Laurel-like leaves of deep green. Excellent as a screen hedge.
- GOLDEN WILLOW** (*Salix vitellina aurea*). Erect and handsome, with rich golden bark. We recommend this variety for wind-break planting, also the Golden Willow and Norway Poplar.
- CEDAR or AMERICAN ARBORVITAE**—Hardy and dependable. It usually grows bushy at the bottom and tapering toward the top. A moist location is preferred. Foliage very soft and of a deep green color.
- SCOTCH PINE** (*Pinus sylvestris*)—Spreading in growth, foliage blue green, rigid and twisted; excellent for shelter planting. Prefers a cool gravelly soil but will grow on almost any soils.



Colorado Blue Spruce

BLACK HILL SPRUCE (*Picea canadensis albertiana*) — Symmetrical, compact and bushy of habit. This is the true Black Hill Spruce and is by no means to be confused by the so-called Black Hill Spruce sold by some nurseries as *Picea nigra*, which is really only the common Black Spruce and not the Black Hill Spruce at all.

NORWAY SPRUCE (*Picea excelsa*).—Appreciated for its rapid growth, thriftiness and heavy masses of deep green foliage. Much quicker growing than White Spruce.

COLORADO BLUE SPRUCE (*Picea pungens*) —The glory of the Colorado Blue Spruce is its foliage, which is an intense blue. It is known as the handsomest tree on the Rocky Mountain Trail.

DWARF MUGHO PINE (*Montana Mughus*)—Broader than its height. Forms a dark, dome shaped bush 5 to 6 feet high. Used on rocky banks, terrace slopes, and corners of entrances.

If interested in large sizes from 4 to 9 feet. Please write for special low prices.

Hebron, North Dakota, Dec. 5, 1927.

I had very good success with the stock from you, in fact 100 per cent grew.—Mr. A. P. N.

Hardy Perennial Plants

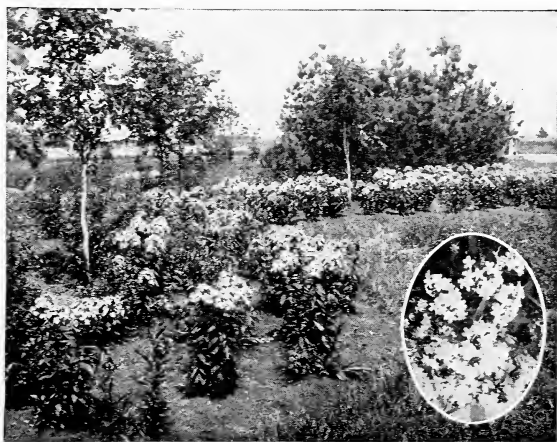
FIELD GROWN

- ACHILLEA**—(The Pearl.) White flower, blooms all summer.
- AQUILEGIA**—(Columbine). Many colors.
- ASTERS**—Annuals, (not hardy), all colors mixed, 40c per dozen.
- ASTERS**—Mixed, many colors, hardy, late bloomer.
- BLEEDING HEART**—Heart-shape, red flowers. 75c each; 3 for \$1.75.
- BOLTONIA**—White flowers, late fall, grows 4 foot.
- CAMPANULA**—Bell shaped flowers blue and light colors.
- CANNA**—Roots, broad leaves, red and yellow flowers. (Store in cellar over winter).
- CANTERBURY BELLS**—Blue and white.
- CARNATIONS, HARDY**—Red, white, pink and yellow.
- CHRYSANTHEMUM**—In red, pink, white and yellow.
- CHINESE LANTERN PLANT**—A beautiful bouquet plant when dried for winter use.
- COREOPSIS**—Yellow, daisy like flowers.
- DELPHINIUMS**—Hybrids. Tall spikes of several shades in blue flowers. Gold Medal Hybrids.
- DELPHINIUMS**—Chinese dwarf, blue and white.
- DIGITALIS**—(Fox-Glove). Mixed colors.
- FERNS**—Hardy, assorted.
- GAILLARDIA**—Many shades and colors. A free bloomer.
- GOLDEN GLOW**—Beautiful double yellow flowers.
- GYSOPHILA PANICULATA**—(Baby's Breath), fine for filler amongst cut flowers. Can be dried and used for winter.
- HEMEROCALLIS**—Hardy lily orange flower.
- HIBISCUS**—Half hardy, immense flowers with crimson eye.
- HOLLYHOCKS**—Double, single, in many colors.
- IRIS**—In many leading varieties; state color wanted. We grow only named varieties. If interested in Iris, write for list.
- LILY AURATUM**—(Gold banded).
- LILY ELEGANS**—Dark red flower, grows 1½ feet, beautiful.
- LILY OF THE VALLEY**—Creamy white early, strong clumps.
- LILY REGALE**—Very fragrant, white flowers. Hardy Chinese variety for the north.
- LILY, TIGER**—Red flowers, black spotted, 4 feet, late.
- LUPINE**—Blue or white flower spikes.
- PANSY PLANTS**—Mixed colors, 50c per dozen. Giant Bloomers.
- PENTSTEMON GRANDIFLORA**—Lavender, bell shaped flower, a hardy native Foxglove.

Phlox

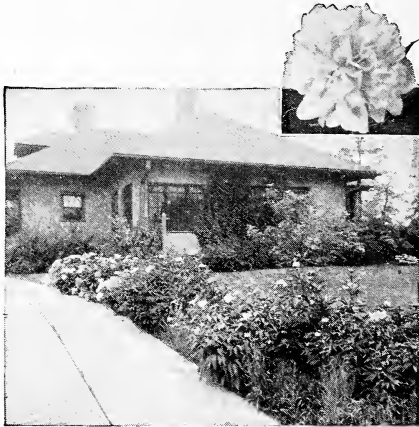
By name and color

- PHLOX**—Varieties we grow, we believe best and most satisfactory, blooms are produced by these, strong field grown plants.
- B. COMPTE**—Satiny, deep wine-red, broad trusses on tall stems; well branched and vigorous. 35c each; 3 for \$1.00.
- BRIDESMAID**—White with carmine center; a popular eyed phlox. 30c each; 3 for 75c.
- ECLAIREUR**—Purple crimson with light center; strong grower and good. 35c each; 3 for \$1.00.
- JULES SANDEAU**—Bright watermelon pink; florets very large; plant dwarf and spreading. 40c each; 3 for \$1.00.
- MRS. CHAS. DORR**—Rosy lavender tall. 35c each; 3 for \$1.00.



Phlox

- MRS. JENKINS**—Pure white; vigorous. 25c each; 5 for \$1.00.
MISS LINGARD—The earliness and long season of bloom distinguishes this as the best tall white for the garden or for forcing. 35c each; 3 for \$1.00.
R. P. STRUTHERS—Bright red shading orange-scarlet, very popular. 25c each; 5 for \$1.00.
RYNSTROM—Soft rose pink, florets very large. 35c each; 4 for \$1.00.
LA. VAGUE—Mauve rose; deeper center. 30c each; 4 for \$1.00.
THOR—Deep salmon pink. 30c each; 4 for \$1.00.
 Assorted mixed at 7 roots, \$1.00.
 The above **Phlox** is offered on page 16 also, for those wishing for an assortment.
PLATYCODON—(Balloon flower). Blue and white.
POPPY ORIENTAL—Scarlet flowers, very showy.
PYRETHRUM, HYBRID—Daisy like flowers, many colors.
YARROW—Rosy pink flowers, July to October, in dense heads.



Peony Planting

Peonies

The Best of all Perennial Plants
 Strong Divisions—3 to 5 eyes.

EARLY FLOWERING VARIETIES

- CAROLINE MATHER**—Purplish Red. \$1.25 each.
DUCHESS DE NEMOURS—White shading yellow.
FESTIVA MAXIMA—Large white.
MONSIEUR JULES ELIE—Pale rose, very fine, \$1.25 each.
OFFICINALIS RUBRA—Crimson, very good.

MID-SEASON FLOWERING VARIETIES

- FELIX CROUSSE**—Very brilliant red, late mid-season.
LA ROSIERE—Creamy white.
LOUIS VAN HOUTTEI—Dark crimson.
MARY BRAND—Bright crimson, very fine. \$2.50 each.
RUBRA TRIUMPHANS—Dark crimson, early mid-season.
SOLFATARE—Sulphur white.

LATE FLOWERING VARIETIES

- DELACHEI**—Deep purplish crimson.
FESTIVA ALBA—Ivory white.
KARL ROSENFELD—Dark red, \$2.00 each.
LOUISE RENAULT—Large pink. \$1.25 each.
MARIE LEMOINE—Beautiful silver white.
RUBRA SUPERBA—Dark crimson, very late.

Here is a good booster for us. He has bought bulbs from us several times. From Minneapolis, Minn.

July 24, 1928.

I am glad to testify that the Gladioli bulbs I bought from you early this spring are up to the same high standard as former purchases, and that they are growing fine and will add materially to my varieties. I am a booster of your products.—C. A. B.

May 4, 1928

I received the Delphinium plants some time ago and all are growing fine.—Greenville, S. C.

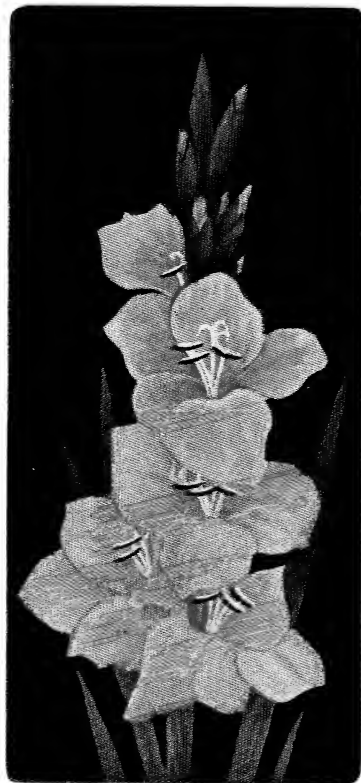


Peony Collection

One Root of Each Color Only, \$1.50

Two Roots Each Color Six in All
For Only \$2.50, From Named Varieties. Our Selection.

For Large 4 Year Clumps Double Above Prices.
Sent Express Only.



America



Schwaben

Beautiful Gladioli

Special for Different Shades

Light Colors—White, Cream, etc., per 50, \$2.50.

Red, Lavender and darker colors, etc., per 50 bulbs \$2.50.

Purple, Blue, Maroon and Blood Red shades, etc., per 50 bulbs, \$3.00.

Pink, Salmon and other lighter shades, \$2.50 per 50 bulbs.

All colors mixed, \$2.00 per 50.

In this way you can buy shades to please your own taste and get them at half catalog price and less.

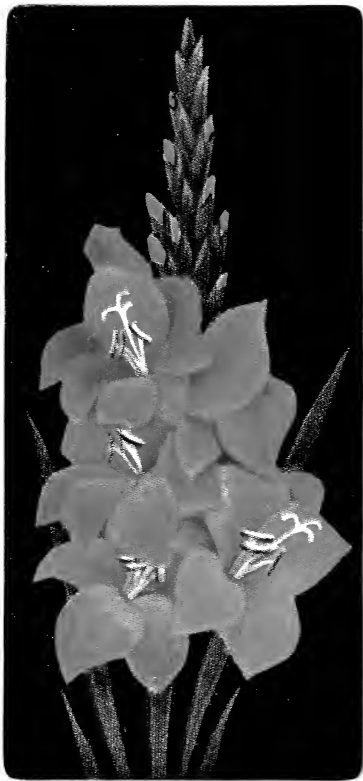
Best Hardy Phlox

In the Phlox we would suggest the following:

Our twelve varieties, one each for only \$3.25. We offer strong field grown blooming size plants. Mixed colors, \$1.75 per dozen; 50 for \$7.50.



aben



Francis King



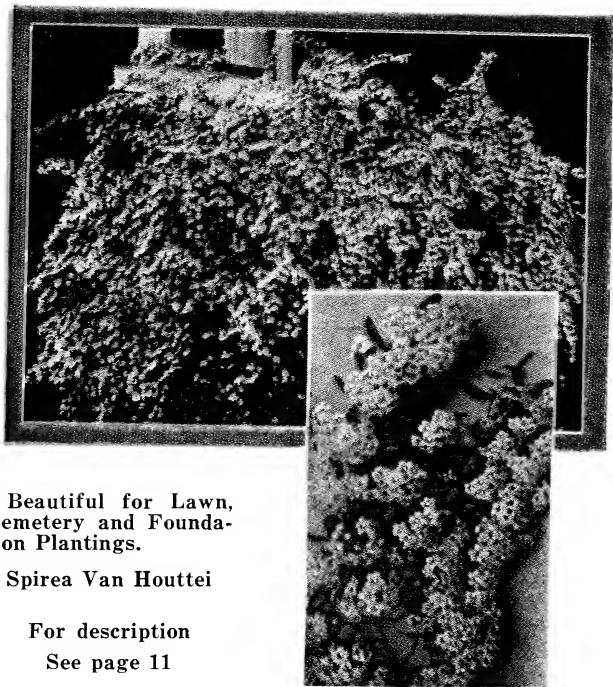
Hardy Phlox



Hydrangea Paniculata Grandiflora.

See page 9 for description.

Used in mass planting with Spirea V. H. Blooming early until late fall. Hydrangea Arb. blooms all summer.



Beautiful for Lawn,
Cemetery and Founda-
tion Plantings.

Spirea Van Houttei

For description

See page 11



Bottom Decorative; Top Center Show; Right Side Cactus;
Left Side Peony Flowering.

Dahlias

For dozen rate multiply by 10.

- DAHLIAS**—We list here a few of the very best sorts, strong free bloomers and showy. These make nice plants for garden, flower bed or hedges. We offer in colors, red, pink, white and yellow, mixed at 15c each; \$1.50 per dozen.
- DELICATE**, pure white, wide petals, orange center, strong. Single flower Each \$0.25
- MRS. CREEVY**—A golden buff; a beauty; unequalled. for decorative effects as cut flowers; single flower..... Each .40
- CANARY**—Clear yellow color; very fine flower; long petals. Peony Flowering; long wide petals..... Each .40
- MINNIE BAXTER**—Deep maroon color, good as a cut flower, beautiful; one of the best..... Each .50
- MRS. W. E. ESTES**—Snow white, large flower; new hybrid; very showy..... Each 1.00
- ETHEL**—Maroon; velvety crimson, very showy variety..... Each .50
- AMERICAN BEAUTY**—Rich. ruby red (hybrid show)..... Each .25
- BALL OF GOLD**—Yellow, little smaller flowers than the Yellow Duke Each .20
- COM. RIVOIRE**—Reddish chamoise. covered with a lovely bloom; one of the best of its class (Peony Flowering) Each .50
- DR. TEVIS**—A novelty; beautiful shade of soft salmon rose, suffused with old gold; immense flowers..... Each 1.00
- DREER'S WHITE**—An excellent white Dahlia, strong bushy plants, makes fine hedges; color glistening white. Hybrid show variety; blooms immense size, often measure over 6 inches across..... Each .50
- MRS. MILLER**—A beautiful purple flower on long stems; do not miss this one Each .25
- SOUV de GUSTAV**—Orange red of very large size bloom Each .30
- SYLVIA DICKY**—Mauve pink; good variety, very showy, large flowers Each .60
- YELLOW DUKE**—Clear yellow, large flowers and free bloomer. Show Each .30
- POMPON or Bouquet Dahlia**—A very small dahlia flower, low growing; nice for borders, Isabella, orange scarlet at Each .25
- The following sell at 50c each, except where noted:
- F. W. FELLOW**—Bronze Cactus..... Each \$1.00
- MILLIONAIRE**—Largest Pink. Decorative..... Each .75
- MRS. J. H. DICK**—Yellow and Bronze. Decorative..... Each .75
- BREAK O'DAY**—Cream. Decorative Each .75
- PATRICK O'MARA**—Bronze orange. Decorative Each .75
- PRIDE OF CALIFORNIA**—Large scarlet. Decorative
- GLADYS SHERWOOD**—Fine white. Decorative..... Each .75
- MINA BURGLE**—Deep red. Decorative
- MRS. EDNA SPENCER**—Lavender Cactus..... Each .75
- U. S. AMERICA**—Old Gold. Decorative..... Each 1.00
- SUNSET GLOW**—Red and Gold Cactus..... Each 1.00
- ATTRACTION**—Large, pink cactus.
- MRS. C. H. BRICK**—Variegated.

Gladioli

GLADIOLI SURE TO BLOOM—ALL BATTLE LAKE GROWN
"FULL OF PEP"—25 sold at 100 rate.

We list only the price per bulb, but if you want dozen, multiply by ten—six sold at dozen rate. Hundred rate multiply by seven. "S" means small, "L" large, etc. If you want smaller size bulbs we sell medium size, two for the price of one. Smaller sizes, four bulbs for the price of one. All sizes will bloom first year.

IN SEASON WE SELL AND SHIP CUT FLOWERS. TWO SIZE BOXES, \$1.00 and \$2.00. Safe delivery on cut flowers anywhere.

A. E. KUNDERD—A very strongly ruffled variety, tall and stately. A rapid multiplier. Color rich salmon-rose, lighter towards the center of throat with very beautiful markings on three lower petals. Each, \$3.00; 2 small \$3.00.

AMERICA—A soft lavender pink with wax-like flowers on strong spike; each 6c; dozen 60c; Bulblets 25c per 200.

ANNA EBERIUS (Diener)—Deep Rhodamine purple shading into very deep Bordeaux center. Each 15c; Bulblets 25c per 150.

ANTHONY B. KUNDERD—Tall, large, intensely ruffled flower of delicate, deep cream color. Overspread finest blush pink. Entire lower petals beautiful primrose-cream flushed pink at edges. Large, each, 15c; 2 small 15c.

BARON JOS. HULOT—Deep violet blue, medium size, each 10c.

BATTLE CREEK—An attractive, almost self-colored deep-violet, a little deeper in throat. Good size and many open at a time. A showy flower. Each 20c.

BLUSHING BEAUTY—Opening buds blush pink, flower softest possible blush, many open. Dainty pink throat lines. A marvel of daintiness and refinement. Large, each 20c; 2 small 20c.

BLACKHAWK—Large cardinal red; each 10c; dozen \$1.00.

BUCKEYE—Very large, massive bloom of fine rose-pink color with tint of old-rose at edge of petals. A beautiful, large rose-red throat. Each, 20c; 2 small, 20c.

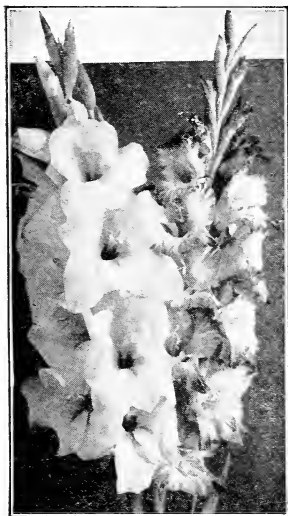
BUMBLE BEE—Salmon Rose Pink. Very large flower, 15c.

CHICAGO WHITE—White with lavender marking, 6c each; Bulblets 25c for 100.

DR. NELSON SHOOK—A giant in plant and flower. Color of deep tyrian rose. Large, \$1.00, 2 small, \$1.00.

DREAM—Large, massive bloom. Deep salmon-red. Large, very showy blotches. Extra grand. Each, 20c; 2 small for 20c.

ED SPRINGER—Strong, fine plant, showy flowers of light lavender rose-pink. Outer edges of petals are a stronger rose-pink color, somewhat flaked. Lower petals have fine rose-red markings bordered and tinted white. Each, 50c.



Europa and Rose Ash

EUROPA—Pure white, very large flowers, 15c each.

EVERLYN KIRTLAND—Rose pink. Large, 15c each.

FIRE RIBBON—Tall, with many blooms open at a time. The spike is a long, fiery band of glowing red. Exceedingly rich and strikingly showy. Each, 10c.

FRANCIS KING—Large, light scarlet; each 6c; dozen 60c.

GENERAL JOFFRE—Maroon red, 15c each; Bulblets 25c per 100.

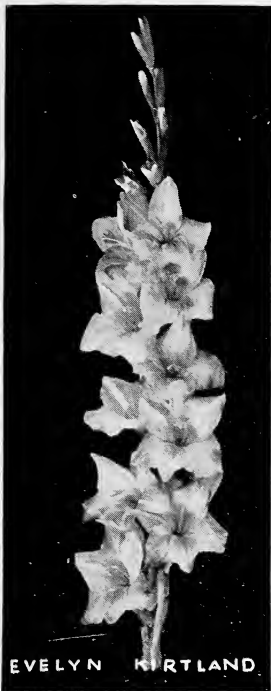
GIANT NYMPH (Coleman)—A giant in growth and flowers. Light rose pink with creamy yellow throat. Don't miss this one. Each 20c; Bulblets 25c per 100.

GOLDEN BUFF—Golden buff color. Lower petals yellow with beautiful feather-like throat markings. Distinct and fine. Illustrated on page 32. Each, 10c.

GOLDEN KING—Golden yellow, with crimson blotch, very strong spike; each 10c; dozen, \$1.00.

GOLDEN MEASURE—Fine golden yellow. Pure with no markings. Best yellow to date. Each, 20c.

GOSHEN—A fine Pendleton seedling of medium deep silvery rose-pink color. Large, showy rose-red blotches. Very good. Each, 15c.



HALLEY—Bright salmon, large early variety, very good, each 8c; Bulblets 25c per 200.

HERADA—Blooms immense size on strong stalks, pure mauve. 15c each; Bulblets 25c.

HENRY FORD (Diener)—Very dark Rhodamine purple shading into deeper tones near center. Color very clear like Anna Eberius, but much larger and clearer. Very prolific. Each 25c; half size, 10c; Bulblets 25c per 100; 250 for 50c.

HIGHLAND LADDIE — Large, massive and beautiful pink of a decided and pleasing shade. A very choice kind and a rapid multiplier. Each, 15c.

IMMENSITY—Tall, strong plant. Bright salmon color. Very large flowers and many open at a time. Very choice. Each, 25c.

IMPERIUM — Extra strong and tall, fine plant. Flowers very large and widely open. Color of fine, deep rose pink or light cherry red. Lower petals deeper bright red and have an extra fine bluish red central bar. A perfect and a very beautiful variety. Each, 50c.

INDIAN — Strong plant, large, well expanded flowers. Many open at a time. Color of deep aniline or Indian-red. Each 15c.

INDIAN SUMMER—Full size bulbs produce strong spikes with six to eight very massive ruffled flowers open at a time. Color, a blush or light lavender rose-pink on a white ground. Very distinct flower. Especially valuable to the gladiolus breeder, as it is a seed-bearing "hybrid." Each 75c; 2 small 75c.

INTENSITY—Strong, vigorous plant with large, massive, widely open flowers. Color rich, deep, bright red, darker toward outer portion. Fine, rich deep red feathered median line on lower petals. Strongly ruffled and one of the very finest ruffled varieties. Each, \$1.00.

LE MARECHAL FOCH—Beautiful shade of light pink flower, much larger than America. Each, 10c.

LILY WHITE—Pure white, early florist variety; 15c each.

LUSTRE — Tall, large flowered orange-vermilion. Grand and beautiful. Each, 15c.

LOUISE—Very large open flower measuring from five to six inches in diameter. Color, fine bright blue lavender with wine-colored blotch. Very good. One for 15c. Try some and be delighted. Bulblets 25c per 150.

MAGIC—Tall, finest lavender-blue. Large, rich, purple throat blotches. Fine. Each, 10c.

MAGIC K—Lavender Blue, rich purple, throat blotch, 10c.

MONA LISA—Strong plant. Many flowers open at a time. Of palest soft rose-pink, or blushed white, ruffled. A magnificent, almost pure self-color. One of the most delicate and refined shades ever produced. Each, 15c; 2 small, 15c.

MRS. DR. NORTON—Soft pink with lighter throat of yellowish tint. Flowers well open. Each, 15c.

MRS. FRANK PENDLETON—(Kundred). Large open flowers of bright rose pink, with large carmine blotch. If you want a beautiful "Glad" get this. Each 10c; Bulblets 25c per 150.

MRS. H. E. BOTKIN (Diener)—Light geranium pink heavily ruffled, flame scarlet center. Strong, well built spikes, first class show and cut variety. One of the loveliest combinations in Gladioli. It has created a sensation wherever exhibited. One of the greatest and most perfect creations ever produced. Each, 15c; half size, 2 for 20c.

April 22, 1928.

Many thanks for the fine peony roots which came this afternoon. I appreciate your sending me such fine roots and I know I will enjoy them in my garden very much. Very truly yours,
E. H. F., Youngstown, Ohio.

- ORANGE GLOW**—Very tall, showy spikes with glowing, orange salmon flowers. Exceptionally distinct and striking. Each 15c.
- PAGEANT**—Tall, sturdy plant with six to eight or more large, beautiful flowers open at a time. Color a delicate rose pink ground flaked a rich, showy rose red. Deeper toward outer ends of petals. Throat lighter and lower petals a fine shade of yellow with very pretty pencilings. The colors harmonize so perfectly as to give the entire flower an almost self color effect. Very attractive and beautiful. Each, 35c.
- PEACE**—Large grand white flower with pale violet feathering on lower petals. Each 10c.
- PINK CLOUD**—Ruffled variety. Usually seven to nine beautiful, soft rose-pink blossoms open at a time. A very beautiful, deeper rose throat. Each, 35c; 2 small, 35c.
- PRINCEPINE**—Large crimson flower with white blotch. One of the best showy glads. Each 8c; Bulblets 25c per 200.
- PURPLE GLORY**—The Giant of the Kunderdii Glory race, and of remarkable color. Deepest velvety maroon red, with almost black blotches, like burned into the petals. Beautifully ruffled. Extraordinarily. Each, 15c; 2 small for 25c.
- ROSE ASH (Diener)**—Corinthian red shading into Ashes of Rose color on the outer edges. Lower petals light yellow speckled with ruby. Flowers large, well set on the spike. Each, 15c.
- ROSY GLOW**—Giant plant, massive flower of fine rose-pink on white ground. Very beautiful. Each, 15c.
- SCARLET VELVET**—Dark red, large flowers. Each, 8c; dozen 80c; \$7.00 per 100.
- SCHWABEN**—Yellow, with carmine markings on lower petals. Each, 10c; Bulblets 25c for 150.
- SPLENDORA**—Splendid, very dark wine-black. A fine, rich, distinct sort. Each, 10c.
- SULPHUR GLOW**—A beautiful shade of sulphur-yellow. Many well-expanded, intensely ruffled flowers open at a time. Each, 25c.
- TWILIGHT (Kundred)**—Cream white, pointed petals, narrow stripe of pink on lower petals. Each, 15c; Bulblets 25c for 150.
- WAR**—Deep blood-red; large and late flowers, 15c each; \$1.50 per dozen.
- MIXED**—All shades and colors mixed. We believe that our mixture will please because it is made up of many good standard varieties. First size bulbs, 5c; dozen, 50c; 100, \$3.00. Second size bulbs, 4c; dozen, 40c; 100, \$2.50.
- SEEDLING MIXTURE**—Our own origination. Something in color and markings that you have not seen before; our own new varieties. Each 25c; per dozen, \$2.50; 50 for \$8.00.
- Kundred Glory Mixture**. Medium, 7c; Bulblets 25c for 100.



Golden Glow—Hardy Perennial

Breckenridge, Minnesota,

May 7, 1928.

Herewith enclosed due you for postage on this shipment. Nursery stock which was received in first class condition. I don't believe the shrubbery even knew it had been dug up, shipped and replanted as never a leaf withered and it is certainly growing splendidly. Has more pep than shrubbery we have ever bought elsewhere. Yours truly, Mrs. G. B. Breckenridge.

May 23, 1928.

Please find enclosed stamps for postage on the plants I got. The plants came thru in fine shape. Thanking you I remain, A. C. P., Starkweather, N. Dak.



General Jacqueminot

Roses

FRAU KARL DRUSCHKI—Snow white, very large, perfect form. A vigorous grower and free bloomer. Bright, heavy foliage.

GENERAL JACQUEMINOT—This might be called the rose for the million, for it is still a universal favorite. Bright crimson scarlet, exceedingly rich and velvety.

MARGARET DICKSON—Creamy white.

MRS. JOHN LAING—Immense blooms of soft, clear pink, very fragrant on stiff, stocky stems. Produces a longer succession of blooms than most of its class and the bush is not quite so tall and rampant.

MAGNA CHARTA—Bright, clear pink, flushed with violet crimson; flowers large, fine form, sweet, very double and free bloomer.

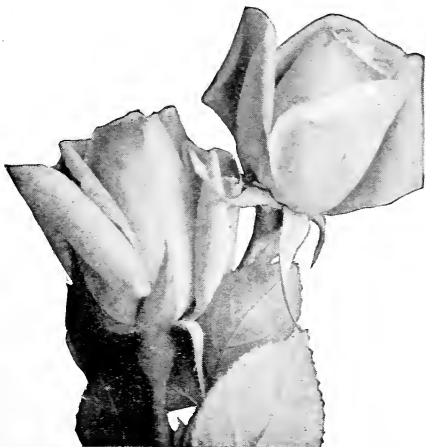
MARSHALL P. WILDER—Dark red; dark crimson.

ULRICH BRUNNER—Large cherry red.

PAUL NEYRON—Large beautiful pink.

PERSIAN YELLOW—The clear yellow rose.

BABY RAMBLER—Red. Dwarf. Flowers in clusters.



Frau Karl Druschki

Wadena, Minnesota.

Swedberg Bros., Nursery, Battle Lake, Minn.

I am writing you thanking you for your prompt shipment of nursery stock the good condition of same and also thanking you for the present you sent. When I need more nursery stock. I will surely send to you. Yours truly, O. M.

P. S. I will show my neighbors my trees and recommend your nursery to them.

ROSA RUGOSA-ESKIMO HARDY ROSES, VERY DOUBLE

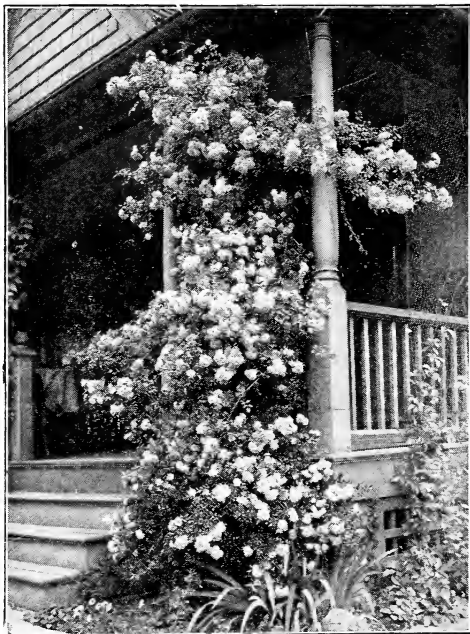


Hansa

- HANSA**—Deep red.
BELLE POITEVINE—Bright rose pink.
AMELLIE GRAVEREAUX—Dark purplish red.
F. J. GROOTENDORST—Red flowers in clusters. The best cemetery rose.
RUGOSA HYBRID—Brilliant red clustered flowers.
CONRAD F. MEYER—Clear, silvery pink.
SIR THOMAS LIPTON—Snow white.
MME. VILLEMINOT—Rose pink, large.
 All these hardy Eskimo Roses will live anywhere without protection.

CLIMBING ROSES

- CRIMSON RAMBLER**—Crimson color.
EXCELSA—Dark red, strong grower.
SEVEN SISTERS—Blush pink.



Crimson Rambler Roses

April 24, 1928.

Gentlemen. The order of Delphiniums reached me safely. I am very much pleased with them. They are growing wonderfully. Thank you for such nice plants. Very respectfully, Miss E. F., Tupper Lake, N. Y.

CLIMBING VINES

CLEMATIS Pauciflora, white.

CLEMATIS Jackmanni, purple.

AMPELOPSIS, — (Boston Ivy), dense ivy-like leaves.

VIRGINIA CREEPER (American Ivy) Vigorous grower.

WINDOW BOX PLANTS

Coleus 15c each; Geraniums Select. 35c each; Vinca, variegated Vine, 35c each; Blue Lobelia everblooming, 15c; Petunia, all colors at 15c; Sweet Alyssums, white, at 15c. Ready for delivery May 20th.



Virginia Creeper

Seeds

WHITE CLOVER SEED—80c per pound, 5 pounds for \$3.75. Golf course. Mixture grasses at 60c lb.: 10 lbs. \$5.00.

LAWN GRASS—Velvet mixture at 40c per pound. 5 lbs. \$2.00; 10 lbs. \$3.75.

NAVY BEAN—Carefully hand selected at 15c for half lb., 30c per lb.: 5 lbs. for \$1.25.

WE CARRY A FULL LINE OF GARDEN and FLOWER SEEDS. SEND FOR LIST.

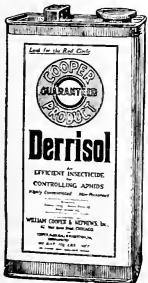


Flower Garden where Hardy Perennials are used

Received Gladiolus bulbs last spring and was very much pleased with them. There were about twenty colors out of the 25 bulbs. Will ask you to please send me your catalog, also to the friends whose names I enclose—Mrs. O. E., Sacred Heart, Minn.

Derrisol Summer Spray

Recommended by experiment Stations. One ounce bottle 40c by mail. Makes six gallons of spray.



SCALECIDE The complete dormant spray. Pleasant to use. Non-poisonous. Kills scale, insects, eggs, larvae and disease cankers and fungous spores wintering on the plant. Mixed instantly. Dilute 1-15. Price gallon, \$1.75.

SULFOCIDE For all kinds of fruits, vegetables, and flowers. Controls: Apple scab, brown rot of peaches, plums and cherries; blight and rot of potatoes, tomatoes and melons; mildew and rust of flowers and shrubs. Convenient, economical, effective. Dilute 1-200. Quart, \$1.00.

Be sure to write for Spray Books and Pamphlets—they are FREE.

Home Beautifying Suggestions

Let us help you—the cost will be very small and if the stock is bought from us, no charge is made.

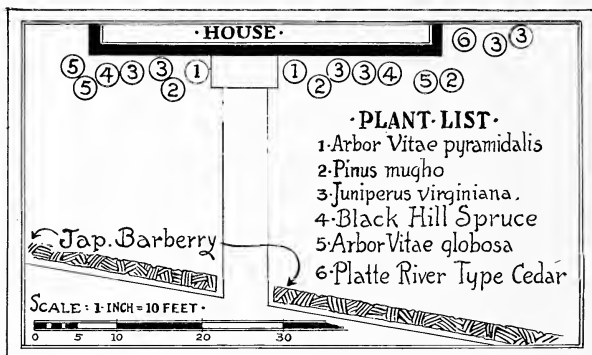
Make up a pencil sketch, mark all lines, roads, alleys, trees, shrubs all ready in place, if any.

Attractive landscapes or home plantings do not “happen,” but require forethought and knowledge of plant life. Our knowledge or experience is at your command.

If you are interested in improving your home grounds, or prefer to work out your own problems we have a number of booklets that will prove of interest:

HOME BEAUTIFYING SUGGESTIONS, 48 pages, with colored illustrations and describing many sorts not listed otherwise; or adapted to more favorable sections.

THE ABOVE WILL BE SENT for 10c in stamps.



Planted with shrubs instead of evergreens. We would suggest the following varieties, or your own choice.

No. 1—2 Honeysuckle, Pink.

No. 2—3 Hydrangea Arbor Vitae.

No. 3—6 Spirea Van Houttei.

No. 4—2 Hydrangea P. G.

No. 5—3 Grootendorst Rose.

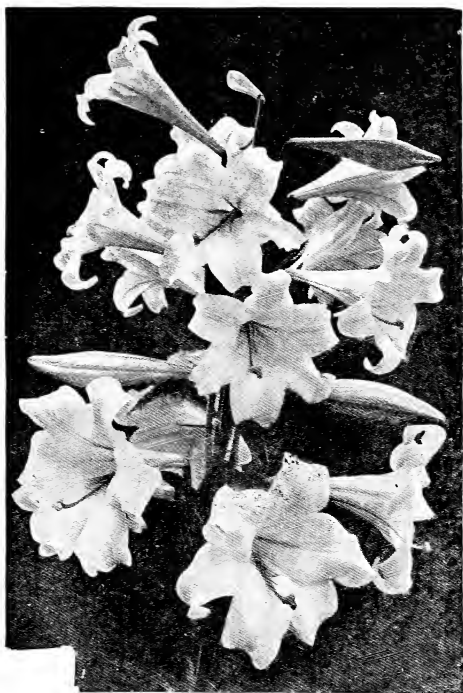
No. 6—1 Spirea Aurea Golden.

Hedge in front, Buckthorn, Caragana or Cotoneaster can be used.

Let us help you with your landscape problems.

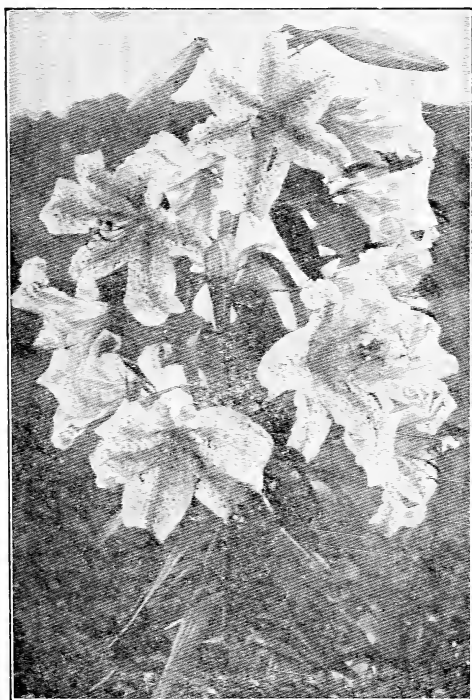
Plants received O. K. I am sending money order for \$7.78 as per bill. Postage is high, but plants cheaper to be in A-1 condition, so they may be cheaper in the end.—E. W. E., Galata, Montana. (1000 Sunbeam ordered.)

Enclosed find———, due you. Received the Nursery Stock yesterday. It looks fine.—Mrs. J. A. S., Rothsay, Minn.

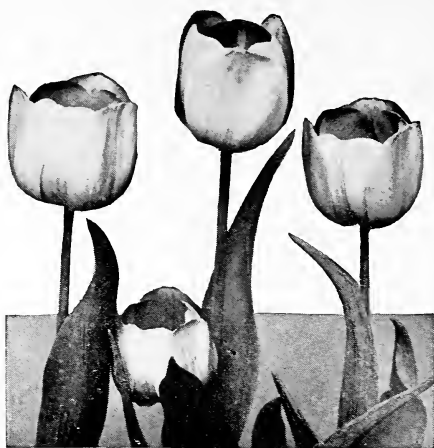


Lily Regale

White trumpet flowers with slight pink and other colored stripes on the lower petals. Very large and fragrant blooms.



Auratum Lily (Gold Banded)



Tulips

In fine mixed colors at 60c per dozen; \$4.75 per 100.

Red colors at 75c per dozen; pink and salmon colors at 65c per dozen; white and light colors at 60c per dozen. Several colors mixed at 50c per dozen.

HYACINTHS—First size bulbs 20c each; \$2.00 per doz. in blue, red, pink, white, yellow and purple. Mammoth size bulbs at \$3.00 per dozen.

Evergreen Seedlings

Am. Arborvitae 2 yr. 4-6 ft.....15	for \$1.00; \$75.00 for 500
Black H. Spruce, 2 yr. 3-4 ft. ...20	for 1.00; 20.00 for 500
Col. Blue Spruce, 2 yr. 4-6 ft. 10	for 1.00; 30.00 for 500
Norway Spruce, 8-10 ft.....20	for 1.00; 20.00 for 500
Western Scotch Pine, 6-8 ft.....25	for 1.00; 12.00 for 500
Mugho (Dwf. Type), 3-4 ft.....10	for 1.00.

See Page 12.

Our Instruction Book is Free with every Order.
“Successful Planting,” sixteen pages—Price 5c.

Feb. 12, 1929. The things I got from you last year were very satisfactory.—Yours truly, F. S. Martin. Puyallup, Wash.

Price List

NEW LOW PRICE FOR THIS COMING SEASON: TERMS CASH WITH ORDER or 25 per cent and balance C. O. D.

Please send in your orders early so we can better reserve the goods and fill your orders.

APPLES AND CRABS—Pages 4 and 5

	Each	12	25
Bearing sizes	\$1.50	\$15.00	\$30.00
5 to 7 feet	1.00	10.00	20.00
4½ to 5 feet75	7.00	13.50

Prices as above except otherwise noted.

Apple or Crab, Grafts, \$2.00 per 50; \$4.00 per 100.

Seedlings—Apples and Crab Trees, 2 to 3 ft. sizes at 25c; \$2.50 per 12; 3 to 4 ft. sizes at 35c; \$3.50 per 12.

PLUMS AND CHERRIES—Pages 3 and 4

	Each	12	25
Bearing sizes	\$1.50	\$15.00	\$30.00
5½ to 7 feet	1.00	11.00	21.50
4 to 5 feet85	8.50	13.50
3 to 4 feet70	7.00	12.00

MINNESOTA PEAR NO. 1—Page 4

Two year old	Each	\$1.25
One year old	Each	.90

BETA, ALPHA, CONCORD GRAPES—Page 5

	Each	12
One year	\$0.25	\$ 2.00
Two year strong40	4.00
Three year strong50	5.00

GOOSEBERRIES AND CURRANTS—Page 5

	Each	12
CURRANTS, strong plants	\$.25	\$ 3.50
Perfection, the very best red35	3.50
GOOSEBERRIES, two year30	2.50
Three year50	5.00
COMO, (The new Minnesota Gooseberry)35	4.20

RASPBERRIES—Page 7

	12	25	100
Strong one year	\$1.00	1.75	\$ 5.00
Transplanted, 2 year	2.00	3.50	10.00
Latham, one year	1.30	2.50	6.00
Latham, 2 year transplanted	2.60	5.00	12.00

STRAWBERRY PLANTS—Page 6

	25	100	200	1000
Senator Dunlap, Premier, etc.....	\$0.50	\$1.25	\$2.30	\$ 9.00
New Minn., Breeding Farm				
Strawberry		1.50	3.00	12.00
New Beaver	1.00	3.00		
Everbearing, all varieties80	2.50	4.50	15.00
Mastodon, Everbearing				
the world's best	1.00	3.50	7.00	30.00

ORNAMENTAL FLOWERING SHRUBS—Pages 8, 9, 10 and 11

1½ to 2 feet.....	\$0.35 each;	\$3.50 per 12;	\$25.00 per 100
2 to 3 feet.....	.50 each;	5.00 per 12;	40.00 per 100
3 to 4 feet.....	.75 each;	7.50 per 12;	60.00 per 100

We have a full line of flowering shrubs that are one and two years old that we will offer at a small price. Such as Bridal Wreath, Spirea, Anthony Waterer Spirea, Gaillardia Spirea, Honey-suckle pink or white, Mock Orange, Snowberry, Lilac purple, Cotoneaster, Buckthorne and Caragana—selling at 9 for \$1.00 and not less than three of one kind can be ordered; no order less than \$1.00.

Prices on shrubs are as noted below:

Hydrangea, Tree form, 3 to 4 feet at \$1.25.

Hydrangea P. G. or Arb. are 50c and 75c each.

Lilac, Hungarian and Persion are 75c and up.

Almond and Triloba are 75c and up.

SHADE AND ORNAMENTAL TREES—Page 12

	Each	Per 10
2 to 3 feet, Postpaid	0.35	\$ 3.00
3 to 4 feet, Postpaid50	4.00
4 to 5 feet70	6.00
5 to 6 feet	1.00	9.00
6 to 7 feet	1.50	12.50
7 to 8 feet	2.00	
8 to 10 feet	2.50	

Cut Leaf Weeping Birch 4 to 5 ft. \$2.00; 5 to 6 ft. \$4.00; 6 to 8 ft. \$6.00.

Weeping Willow, 5 to 6 ft. 75c; 6 to 8 ft. \$1.00.

Horse Chestnut, Butternut and Walnut, 4 to 5 ft. \$1.25; 5 to 7 ft. \$1.50; Weeping Mountain Ash, \$2.00 each.

Schwedlers Maple \$4.00 each; 5 to 6 ft. Sugar Maple \$2.00 each.

Page 7	Each	12	100
Asparagus—Washington	\$0.10	\$0.50	\$ 3.00
Rhubarb—Red, juicy, large, Calif. Sweet....	.25	1.90	12.00
Chives or Grass Onions15	1.00	
Horse Radish10	1.00	8.00

Evergreens, Page 12. Norway Spruce and American Arbor Vitae, 12 to 18 inches 75c each; \$8.00 per doz.; 18 to 24 inches \$1.00 each; \$11.50 per dozen; 24 to 30 inches, B. and B. \$1.50 each; \$16.00 per dozen; 3 to 4 feet, \$3.00 each; \$35.00 per dozen; 4 to 5 ft. \$4.00 each; \$45.00 per dozen; 5 to 6 ft. \$6.00 each; \$60.00 per dozen.

MUGHO PINE, 12 to 18 inches \$3.50, balled and burlapped.

COLORADO BLUE SPRUCE—Brightest Blue, 18 to 24 in. \$7.50; Brightest Blue, 2 to 3 feet, \$10.00; Green Blue, 18 to 24 inches, \$4.00; Green Blue, 2 to 3 ft. \$6.00.

If interested in seedlings and smaller evergreens see page 29. We will make you a very attractive price on larger Evergreens. Write us your needs.

HEDGE PLANT PRICES—Page 11

Priced per 100—25 at 100 Rates

	8-12 inch	12-18 inch	18-24 inch	2-3 ft.
Barberry Thunbergii	\$ 9.00	\$20.00	\$30.00	\$50.00
Cotoneaster	10.00		35.00	48.00
Buckthorn	7.00	9.00	10.00	15.00
Caragana (Siberian) Pea Tree.....	4.00	8.00	10.00	20.00
Russian Olive		6.00	7.00	10.00
Van Houttei Spirea		13.00	20.00	25.00
Alphin Currant	10.00	15.00		
New Red Leaved Barberry.....	20.00	80.00		

ARTEMISA—Dark Green, finely cut foliage, 3 to 4 ft. at 25c each; 100 for \$15.00.

PEONIES AND HARDY PERENNIAL PLANTS—Pages 13 and 14

All plants not otherwise priced; extra strong, 30c each; \$3.00 per dozen. Medium strong, 25c each; \$2.50 per dozen.

BLEEDING HEART—75c each; 3 for \$1.75.

PANSY PLANTS—Mixed colors, 50c per dozen.

These are the Master Giant Pansy, seed costs better than \$8.00 per ounce, so we give you quality.

LILY REGALE—The Hardy Easter Lily. Very fragrant, white flowers. Large bulbs, 50c; small bulbs, 25c.

LILY AURATUM—(Gold banded) 40c each; \$4.00 per 12.

CANNA—Roots, broad leaves, red and yellow flowers, \$1.50 per 12; \$6.00 per 50. (Store in cellar over winter.)

PEONIES BY COLOR—Page 14

For Dozen rates, multiply by 10.

Pink, 50c each; Red, 60c each; White, 50c each; strong 2-year old plants at 75c each; large clumps at \$1.50 each and up, unless otherwise priced in catalog.

CLIMBING VINES—Page 25

First size, 75c each; second size, 50c each.

ROSES—Page 23 and 24

Two year strong, \$1.00 each; \$8.00 per dozen if not noted.

CLIMBING ROSES—75c each; \$6.00 per dozen, 6 for \$3.00.

SHADE AND ORNAMENTAL TREES—Page 8

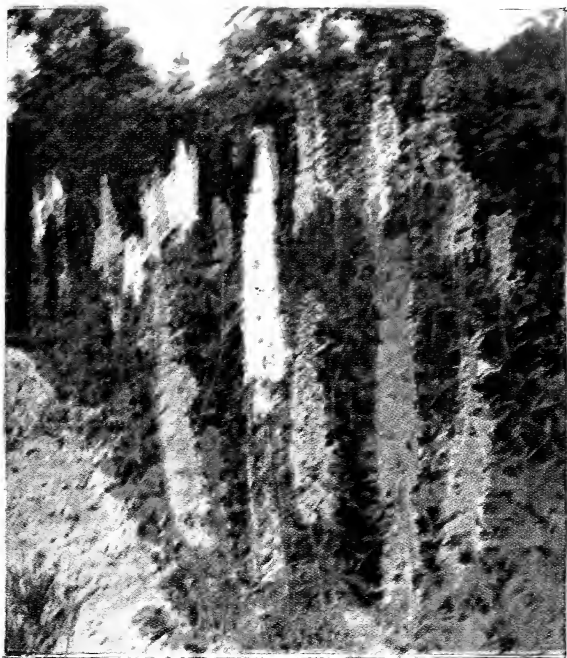
RUSSIAN GOLDEN WILLOW, LAUREL LEAF WILLOW, SILVER POPLAR, NORWAY POPLAR (the sudden saw log), ASH, BOXELDER. Prices below:

	Each	10	100	1000
1 to 2 ft trees.....	\$	\$	\$ 5.00	\$25.00
2 to 3 ft. trees.....			7.50	50.00
3 to 4 ft. trees.....	.20	1.50	10.00	75.00
4 to 5 ft. trees.....	.35	3.00	25.00	
5 to 6 ft. trees.....	.50	4.00	35.00	
6 to 7 ft. trees.....	.75	6.00	50.00	
7 to 8 ft. trees.....	1.00			

Cuttings, Postpaid, \$1.00 per 100; \$6.00 per 1000.

February 10, 29.

Let me say that I was highly pleased with my Delphiniums of last year.—D. E. F., Louisville, Ky.



Delphinium

The Four Leading Hardy Plants—

Delphinium, Aquilegia, Gaillardia and Hardy Phlox

We offer seed from our Improved Delphinium for the first time at \$1.00 per package. The White Delphinium can only be had in the Chinese Variety.

To introduce these wonder plants we offer 10 Gold Medal Hybrids for only \$1.25.

Also 10 Aquilegia (Columbine) assorted colors for \$1.25. 10 Gaillardia (Blanket Flower) for \$1.25 and 9 Hardy Phlox (4 kinds) only \$1.25.

All 39 Plants for only \$4.75. Postpaid.



Aquilegia (Columbine)



COREOPSIS (See page 13)
All summer bloomer.—
The more they are cut the better the
plants bloom.



GAILLARDIA (See page 13)
All summer bloomer.—
See Special Offer
on other side of this page.